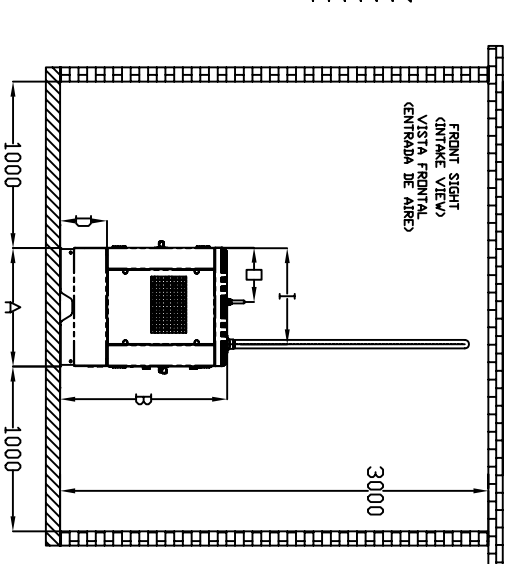
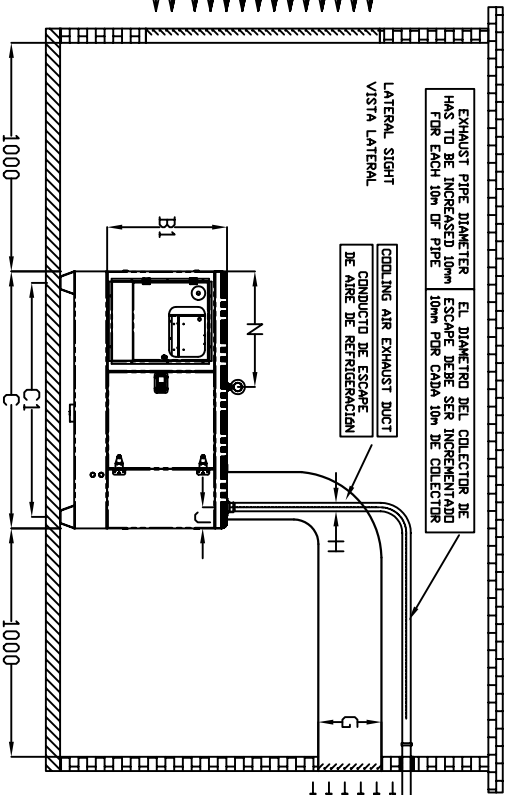
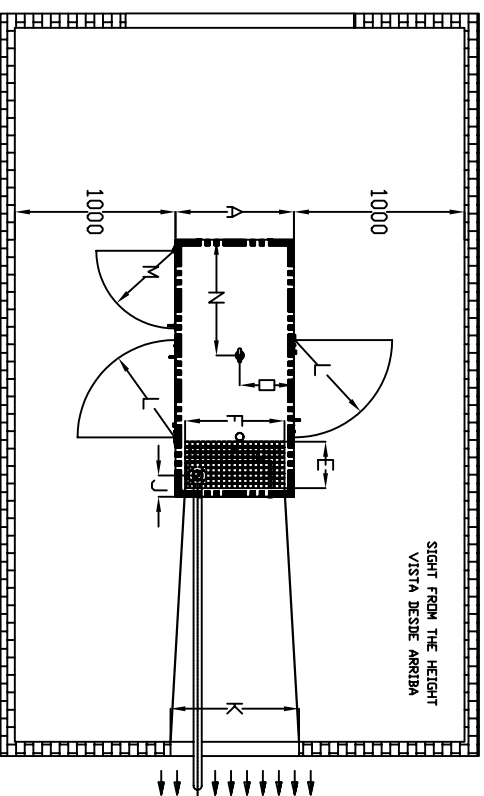


COOLING AIR INTAKE
ENTRADA DE AIRE



	GSV15P	GSV22P
A (mm)	830	830
B (mm)	1710	1710
B1 (mm)	840	840
B2 (mm)	1300	1300
C (mm)	1800	1800
C1 (mm)	1640	1640
D (mm)	330	330
E (mm)	325	325
F (mm)	720	720
G (mm)	450	450
H (mm)	60	60
I (mm)	675	675
J (mm)	150	150
K (mm)	900	900
L (mm)	680	680
M (mm)	545	545
N (mm)	800	800
D (mm)	380	380

COOLING AIR INTAKE
ENTRADA DE AIRE



NOTE: GENERATING SET MUST BE LOCATED WITH, AT LEAST, ONE METER FREE SPACE AROUND FOR MAINTENANCE WORK SURFACE OF COOLING AIR INTAKE LOUVERS MUST BE, AT LEAST, TWICE SURFACE OF COOLING AIR EXHAUST LOUVERS

NOTA: EL GENERADOR DEBE SITUARSE CON, AL MENOS, UN METRO LIBRE ALREDEDOR PARA TRABAJOS DE MANTENIMIENTO LA SUPERFICIE DE REJILLA DE REFRIGERACION DE ENTRADA DEBE SER, AL MENOS, DOS VECES LA SUPERFICIE DE LA REJILLA DE SALIDA DE AIRE

MODEL / MODELO	PRIME POWER POTENCIA	ENGINE MOTOR	ALTERNATOR ALTERNADOR	FUEL TANK (LIT) DEPÓSITO DE COMBUSTIBLE	WEIGHT (KG) PESO (KG)
GSW15P	13.0	403G-15G	ECO 3 2L	50	700
GSW22P	19.4	404C-22G	BCI 184 E	50	765

MODEL / MODELO	AIR FLOW/CAUDALES DE AIRE (M3/H)			FUEL CONSUMPTION/ CONSUMO DE COMBUSTIBLE (L/h)	
	COMBUSTION	COOLING AIR	EXHAUST GASES	75% LOAD	100% LOAD
GSW15P	64.8	3294	163.2	2.7	3.6
GSW22P	87	3618	218.4	4.0	5.3

* IF IN DOUBT/ASK, DO NOT SCALE / EN CASO DE DUDA-PREGUNTAR, NO ESCALAR
 * RECOMMENDED INSTALLATION DIMENSIONS FOR STANDARD CONFIGURATION /
 DIMENSIONES DE INSTALACION RECOMENDADAS PARA CONFIGURACION ESTANDAR
 * THE PRODUCER RESERVES THE RIGHT OF MODIFYING THE DIMENSIONS REPRESENTED IN THIS PLANE WITHOUT PRIOR NOTICE
 EL FABRICANTE SE RESERVA EL DERECHO DE MODIFICAR LAS DIMENSIONES REPRESENTADAS EN ESTE PLANO SIN PREVIO AVISO

2005	DATE	NAME
Drawn		JUG
Checked		
Examined		

RECOMMENDED INSTALLATION DIMENSIONS

STANDARD GENSET GSW15-20

GSW15P-22P



No P/GSW15P-22P 300

Replaced by:
Replaced by: