

OPEN SET
AIR COOLED

SERIES **GBA/GSA**_{12L} **GBA**_{6D-17D}

GBA/GSA12L GBA6D-17D: **Energy for all your needs**

This series of generators is the simplest way to fulfil demand for power. High quality components create generators that are very reliable and easy to use. They are also ideal for starting and powering motor pumps.



Reliability

Engine and alternator ensure a constant, high quality power supply for the most demanding applications.

Economy

Long life and very little maintenance results in very low operation costs.

Easier to use

New design gives easy access for maintenance and repair work.

Ease of handling

Easy transportation – less effort required to move the generator.

MODEL		GBA6D	GBA/GSA12L	GBA14D	GBA17D
PRIME POWER	kVA/kWe	5,6/4,5	10,1/8,1	12,7/10,2	15,0/12,0
EMERGENCY POWER	kVA/kWe	5,9/4,7	11,3/9,0	13,4/10,7	16,2/13,0
ENGINE		DEUTZ D909 L1	LOMBARDINI 9LD 625	DEUTZ F2L 2011	DEUTZ D910 L02
AUTONOMY (100% LOAD)	h	9,6	3,3	29,7	12,2
FUEL TANK CAPAC.	l	14,5	10	90	50
DIMENSIONS (LxWxH)	mm	1226x700x960	1226x700x1015	1400x750x1150	1226x700x1150
WEIGHT	kg	275	280	468	420

PRIME POWER (PRP) (DIN 6270) RATING, OVERLOAD CAPACITY : POWER AVAILABLE FOR CONTINUOUS HEAVY DUTY WITH CONSTANT LOAD

EMERGENCY POWER (LTP) (DIN 6270) RATING, NO OVERLOAD CAPACITY: POWER AVAILABLE FOR CONTINUOUS LIGHT DUTY WITH VARIABLE LOAD

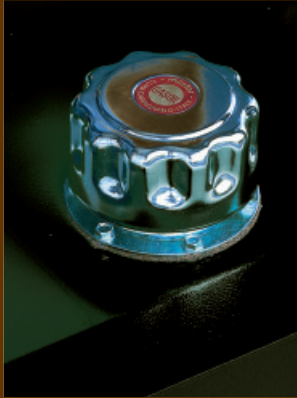
GBA13 COMPLY WITH TA LUFT-4000 REGULATION

OPEN SET
AIR COOLED

SERIES GBA/GSA^{12L} GBA^{6D-17D}

Facility of handling

- Reinforced steel base frame with bolted support legs (🔧) to facilitate installation and fork truck transport



Large autonomy

- High capacity fuel tank (🔧) for longer running without fuel refilling (GBA14D)

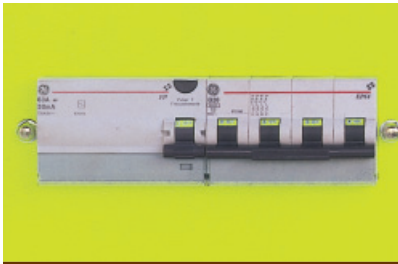
A great reliability

- The IP 21 protection ensures protection against water and dust.
- Rated capacity battery (🔧) for immediate engine start
- Highly efficient alternators
- Integrated-cooling system makes cylinder heads receive additional air-cooling thanks to diagonal fan.
- Anti-vibration isolators ensure a vibration free standing of the generating set



Safety and security

- A main circuit breaker (🔧) protects the main power supply.
- All metal parts are connected to an external grounding point. Fault currents are connected to the ground for your safety
- The engine protection guarantees the shutdown of the machine when an engine failure occurs (GSA12L)



Economic

- Very economic generating sets combined with the highest quality components: the best solution for your private applications
- The oil bath air cleaner increases air filters lifetime (GBA/GSA12L & GBA17D) (🔧)
- Engines have long maintenance intervals and low fuel consumption

Easier use

- The fuel tank (🔧), mounted on the engine (GBA6D-17D&GBA/GSA12L), allows easy refilling
- Generators are delivered ready to start and require no special foundations - they can be installed anywhere
- Accessible and easy to use control panel for manual checking



The producer reserves the right to introduce changes to models and features without prior notice. Models, version and associated products characteristics can vary according to the markets.

CERTIFICATION

Production sites according to ISO 9001 / ISO 14001 directions



SERVICE

After sales service world wide.
12 months warranty.
All the gensets are completely tested before dispatch.