

FK

Generatori sincroni monofasi a 2 poli autoregolati senza spazzole (brushless).
 Protezione: IP23.
 Tensione standard: 115/230 V - 50 Hz.
 Corrente di corto circuito: superiore a 3 In.
 Forme costruttive: IM B34 (B3/B14), IM B35 (B3/B9), IM B35-J609b, SAE 4, SAE 5.



Single-phase synchronous self-regulated brushless 2 poles alternators.
Protection: IP23.
Standard voltage: 115/230 V - 50 Hz.
Short circuit current: greater than 3 In.
Shape: IM B34 (B3/B14), IM B35 (B3/B9), IM B35-J609b, SAE 4, SAE 5.

Caratteristiche tecniche - Technical characteristics						
TIPO TYPE	CODICE CODE	50 Hz - 3000 r.p.m.		60 Hz - 3600 r.p.m.		MASSA MASS IMB35 (kg)
		POTENZA POWER (kVA)	η 4/4 $\cos\phi=1$ (%)	POTENZA POWER (kVA)	η 4/4 $\cos\phi=1$ (%)	
FK 2 MAL	84212140..2	10	78	12.5	79	47
FK 2 MBL	84212160..2	12	79	15	80	56

FT

Generatori sincroni trifasi a 2 poli autoregolati a spazzole.
 Protezione: IP23.
 Tensione standard: 231/400 V - 50 Hz.
 Corrente di corto circuito: superiore a 3.5 In.
 Forme costruttive: IM B34 (B3/B14), IM B35 (B3/B9), IM B35-J609b, SAE 4, SAE 5.

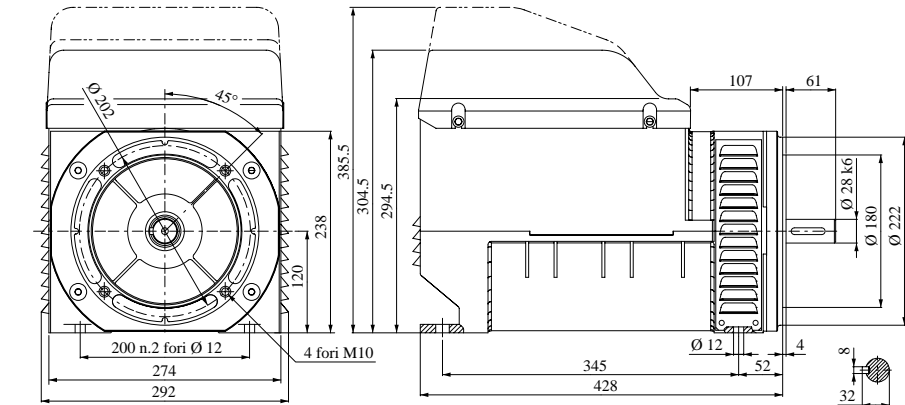


Three-phase synchronous self-regulated brush 2 poles alternators.
Protection: IP23.
Standard voltage: 231/400 V - 50 Hz.
Short circuit current: greater than 3.5 In.
Shape: IM B34 (B3/B14), IM B35 (B3/B9), IM B35-J609b, SAE 4, SAE 5.

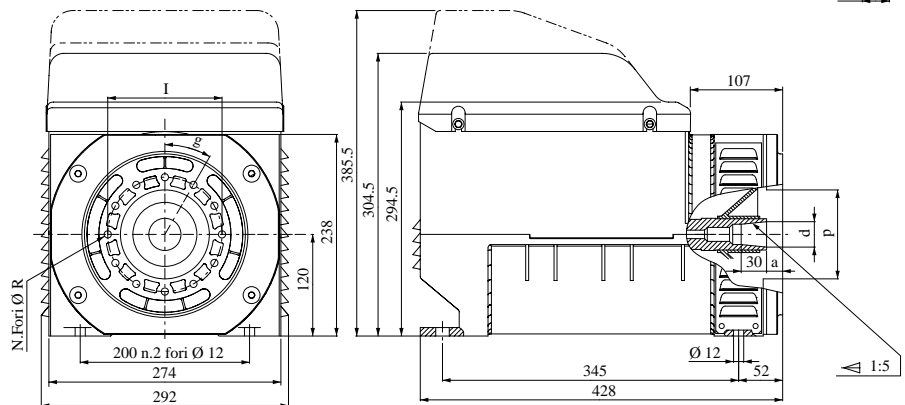
Caratteristiche tecniche - Technical characteristics						
TIPO TYPE	CODICE CODE	50 Hz - 3000 r.p.m.		60 Hz - 3600 r.p.m.		MASSA MASS IMB35 (kg)
		POTENZA POWER (kVA)	η 4/4 $\cos\phi=0.8$ (%)	POTENZA POWER (kVA)	η 4/4 $\cos\phi=0.8$ (%)	
FT 2 MAS	81312140..2	13.5	84	17	85	51
FT 2 MBS	81312160..2	16	85	20	86	60

SINCRO

Dimensioni d'ingombro - Overall dimensions

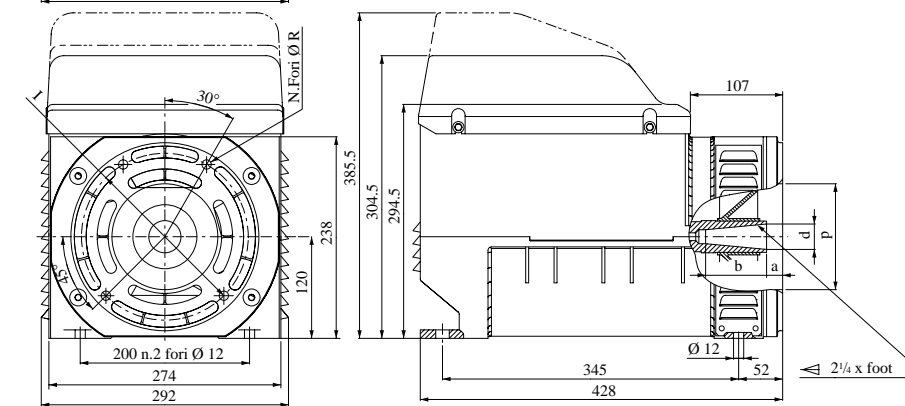


FORMA COSTRUTTIVA - SHAPE:
IMB34 (B3/B14) cod. E



FORMA COSTRUTTIVA - SHAPE:
IMB35 (B3/B9) cod. ...

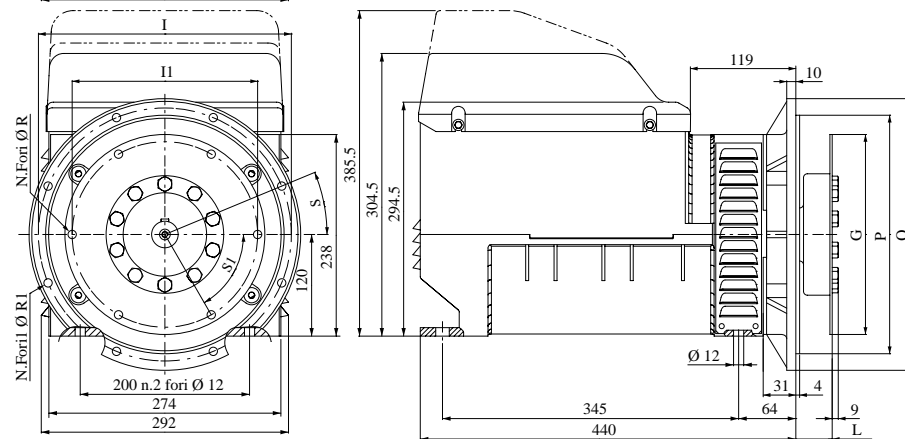
Albero Shaft	Flangia Flange					cod.	
d	a	I	p	N.Fori	R	g	
30	16	135	105	12	9	30°	B
38	5	150	125	4	12	90°	G



FORMA COSTRUTTIVA - SHAPE:
IMB35 - J609b cod. ...

Cono Cone	Albero Shaft			cod.
	d	a	b	
25.4	25.4	63.5	48	D
35	30	39	72	F

Flangia Flange			
I	p	N.Fori	R
165	146.1	4	11
197	163.6	4	11
197	177.8	4	11



FORMA COSTRUTTIVA - SHAPE:
SAE

SAE	Flangia Flange					
	Q	P	I	N.FORI	R1	S
4	405	362	381	12	11	15°
5	358	314.3	333.4	8	11	22°30'

SAE	Giunto a dischi Disk joint					
	L	G	II	N.FORI	R	S1
6.5	30.2	215.9	200	6	9	60°
7.5	30.2	241.3	222.2	8	9	45°