

"U" terminal crimping heads 9024 - 9036



for crimping of tube terminals and connectors

These tools are designed to crimp solderless terminals onto cables from 10 to 630 sq. mm dia. They are very practical crimping tools, their high resistance is due to the special quality of the steel used in their construction and to their compactness which enables great ease of handling. The range of easily interchangeable dies available facilitate crimping of solderless terminals and "C" connectors of any manufacture. These cylinders are supplied with a male header and are ready for attachment to any MULTIFOR pump or control unit.



9024

9036

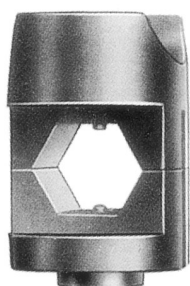


SPECIFICATIONS

	9024	9036
Power kN	200	200
Max. work pressure bar	700	700
Stroke mm.	23	30
Oil capacity for full stroke lt.	0,080	0,100
Length mm.	250	290
Width Ø mm.	90	90
Weight Kg.	5,6	5,9

* HEXAGONAL DIES for head 9024 and 9036

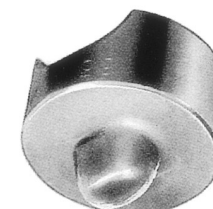
for crimping of:
tube terminals non-insulated
head connectors non-insulated.



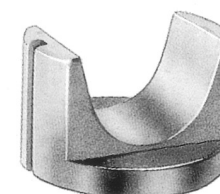
Cable section sq. mm	Type	
	9024	9036
10	9770	9770/36
16	9772	9772/36
25	9774	9774/36
35	9776	9776/36
50	9778	9778/36
70	9780	9780/36
95	9782	9782/36
120	9784	9784/36
150	9786	9786/36
185	9793	9793/36
240	9795	9795/36
300	9797	9797/36
400	9798	9798/36
500	-	9799/36
630	-	9800/36

"V" CRIMPING DIES for head 9024 and 9036

for crimping of
non insulated tube terminals
and head connectors.

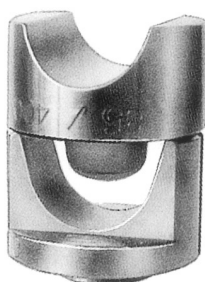


Cable section sq. mm.	Die Type		Punch Type	
	9024	9036	9024	9036
35	9706	9706/36	9702	9702/36
50	9706	9706/36	9702	9702/36
70	9708	9708/36	9704	9704/36
95	9708	9708/36	9704	9704/36
120	9708	9709/36	9704	9704/36
150	9708	9709/36	9704	9704/36
185	9710	9710/36	9704	9704/36
240	9710	9710/36	9704	9704/36
300	9712	9712/36	9704	9704/36
400	9712	9713/36	9704	9716/36
500	-	9714/36	-	9716/36
630	-	9715/36	-	9716/36



"V" DIES for head 9024 and 9036

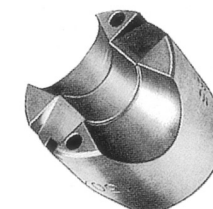
for crimping of:
pre-insulated power terminals.



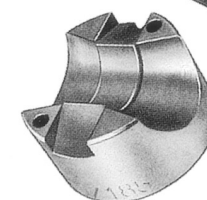
Cable section sq. mm.	Die Type		Punch Type	
	9024	9036	9024	9036
35	9706	9706/36	9718	9718/36
50	9708	9708/36	9704	9704/36
70	9708	9708/36	9702	9702/36
95	9708	9708/36	9702	9702/36
120	9710	9710/36	9704	9704/36

* MEDIUM TENSION DIES for head 9024 and 9036

for round crimping,
with automatic cutting
of possible burrs.

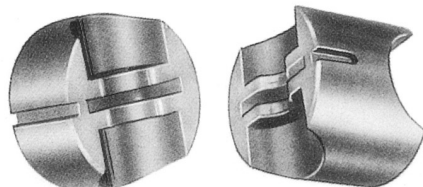


Cable section sq. mm.	Type	
	9024	9036
25-40	9722	9722/36
50-70	9724	9724/36
95-120	9726	9726/36
150-185	9728	9728/36
240-315	9730	9730/36
400	-	9731/36
500	-	9732/36
630	-	9733/36



* SEMICIRCULAR DIES for head 9024 and 9036

for "C" connectors.



Cable section sq. mm.	Type	
	9024	9036
16-25	9750	9750/36
35	9751	9751/36
50-70	9752	9752/36
95	9754	9754/36
120-185	9758	9758/36

* Supplied in pairs except "V" crimping dies.