

**meccalte**

# T16F

MECCALTE spa - Via Roma, 20 - 36051 CREAZZO (VI) ITALY  
Tel. +39 0444/396111 - Fax +39 0444/396166 - e-mail: info@meccalte.it  
website: www.meccalte.com

**3 PHASE**  
**2 POLE**  
**IP 23**

## CHARACTERISTICS

### POWER 230/400 V at 3000 RPM - 50 Hz

Type	CL. H ( $\Delta T=125^{\circ}\text{C}$ )						CL. F ( $\Delta T=105^{\circ}\text{C}$ )		CL. H ( $\Delta T=125^{\circ}\text{C}$ )		T.H.D. %
	THREE-PHASE		MOTOR STARTING CAPABILITY KVA	EFFICIENCY			THREE-PHASE		SINGLE-PHASE		
	KVA	KW COS $\varphi$ 0,8		2/4 %	3/4 %	4/4 %	KVA	KW COS $\varphi$ 0,8	KVA COS $\varphi$ 1	MOTOR STARTING CAPABILITY KVA	
T16F-130	6	4,8	20	75,5	79,5	79,8	5,5	4,4	4	16	< 5
T16F-160	7,5	6	26	78	82,5	82	6,8	5,4	5	19,5	< 5

### POWER 277/480 V at 3600 RPM - 60 Hz

Type	CL. H ( $\Delta T=125^{\circ}\text{C}$ )						CL. F ( $\Delta T=105^{\circ}\text{C}$ )		CL. H ( $\Delta T=125^{\circ}\text{C}$ )		T.H.D. %
	THREE-PHASE		MOTOR STARTING CAPABILITY KVA	EFFICIENCY			THREE-PHASE		SINGLE-PHASE		
	KVA	KW COS $\varphi$ 0,8		2/4 %	3/4 %	4/4 %	KVA	KW COS $\varphi$ 0,8	KVA COS $\varphi$ 1	MOTOR STARTING CAPABILITY KVA	
T16F-130	7,2	5,8	24,5	76,5	80	80,3	6,5	5,3	5	20	< 5
T16F-160	9	7,2	31	79	83	82,5	8,2	6,6	6	23,5	< 5

Type	J (Kgm <sup>2</sup> )	Weight (Kg)	Air Volume (m <sup>3</sup> /min)		Noise dB(A)			
			(m <sup>3</sup> /min)		50 Hz		60 Hz	
			50 Hz	60 Hz	7m	1m	7m	1m
T16F-130	0,0129	30,5	3,4	4,3	60	78	62	80
T16F-160	0,0156	34,5	3,4	4,3	60	78	62	80

Type		T16F-130	T16F-160
Rating "H" class	kVA 50 Hz	6	7,5
Direct - axis synchronous reactance	X <sub>d</sub> %	331	287
Direct - axis transient reactance	X' <sub>d</sub> %	44,5	44
Direct - axis subtransient reactance	X'' <sub>d</sub> %	21,8	21,5
Quadrature - axis synchronous reactance	X <sub>q</sub> %	109	111
Quadrature - axis transient reactance	X' <sub>q</sub> %	109	111
Quadrature-axis subtransient reactance	X'' <sub>q</sub> %	40,6	41
Negative - sequence reactance	X <sub>2</sub> %	23,6	21,5
Zero sequence reactance	X <sub>0</sub> %	8,9	8,2
Transient time constant	T' <sub>d</sub> (ms)	41	38
Subtransient time constant	T'' <sub>d</sub> (ms)	10	9
Armature time constant	T <sub>α</sub> (ms)	5	6
Open circuit time constant	T' <sub>do</sub> (s)	0,8	0,9
Short - circuit ratio	K <sub>cc</sub>	0,86	0,9
Stator winding resistance	Ω	1,5	1,15

REGULATOR	PARALLEL DEVICE	THERMAL PROTECTION			HEATERS	MECHANICAL PROTECTION		
COMPOUND TRANS.		PTC	BIMET DEVICE	PT100		IP21	IP23	IP45
●		<input type="checkbox"/>	<input type="checkbox"/>	<input type="checkbox"/>	<input type="checkbox"/>		●	<input type="checkbox"/>

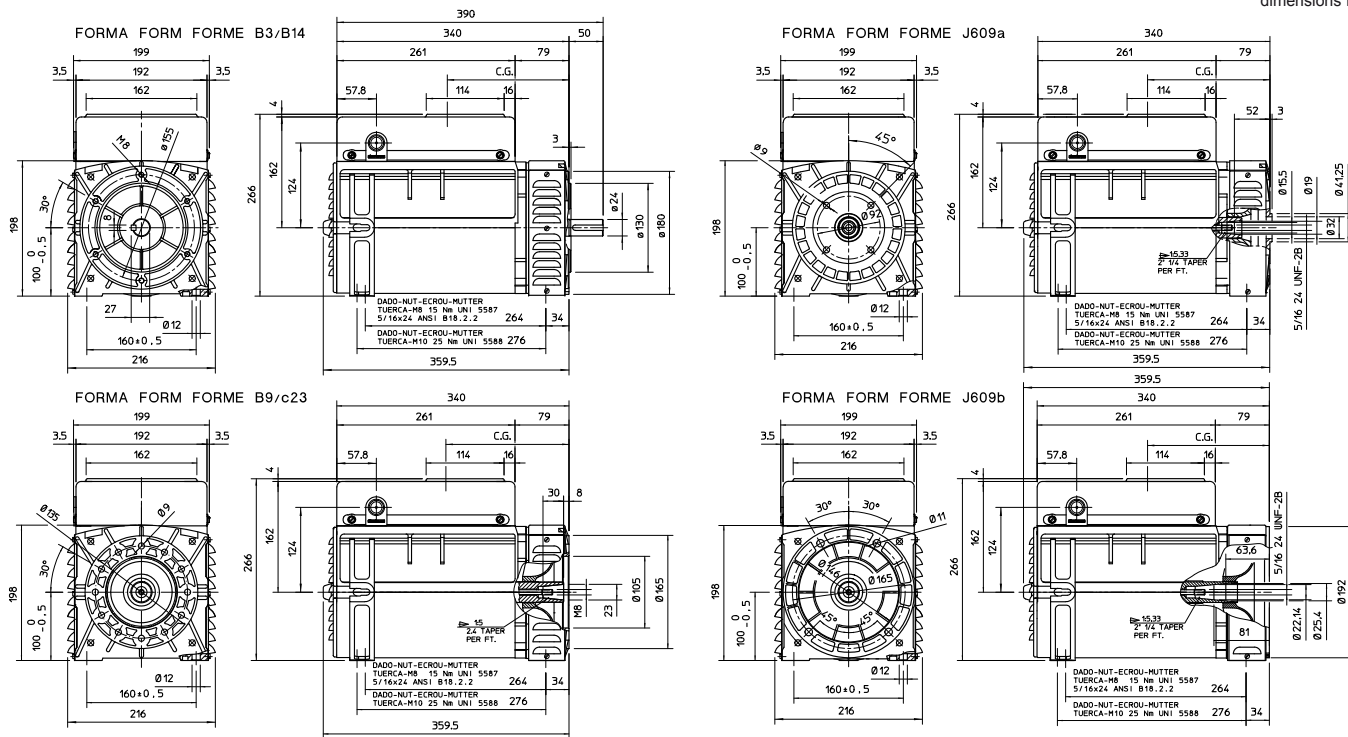
● = Standard

= Optional



## OVERALL SIZE, STANDARD TYPE

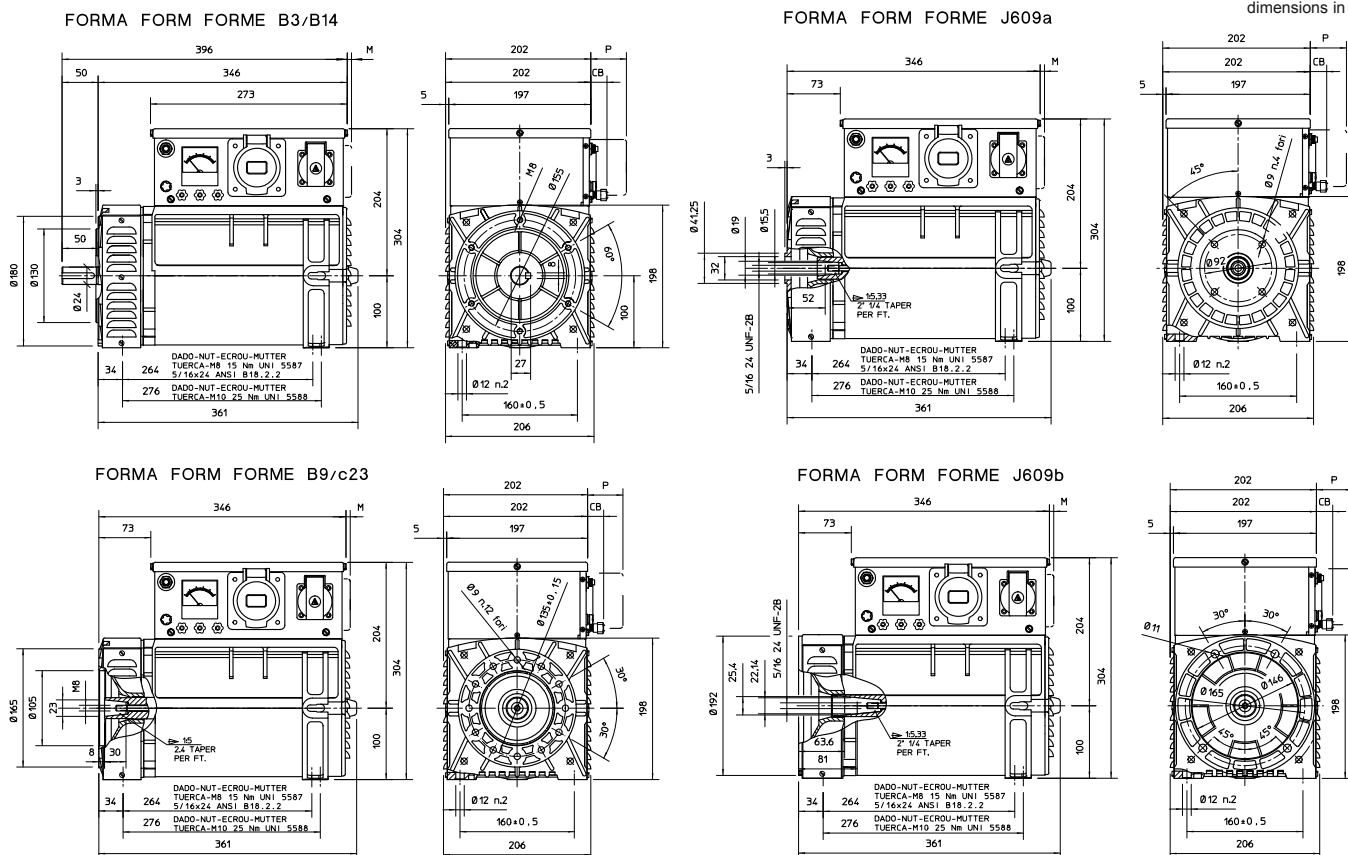
dimensions in mm



FORM	CG	
	130	160
B14	187	172
B9	189	174
J609a	188	173
J609b	188	173

## OVERALL SIZE WITH ELECTRIC PANELBOARD TYPE

dimensions in mm



SOCKETS TYPE	P	THERMAL PROTECTOR OPTIONAL	WITH BATTERY CHARGING OPTIONAL
AMERICAN	4		
FRENCH	10		
SCHUKO	13	M	CB
CEE	50	6	30